

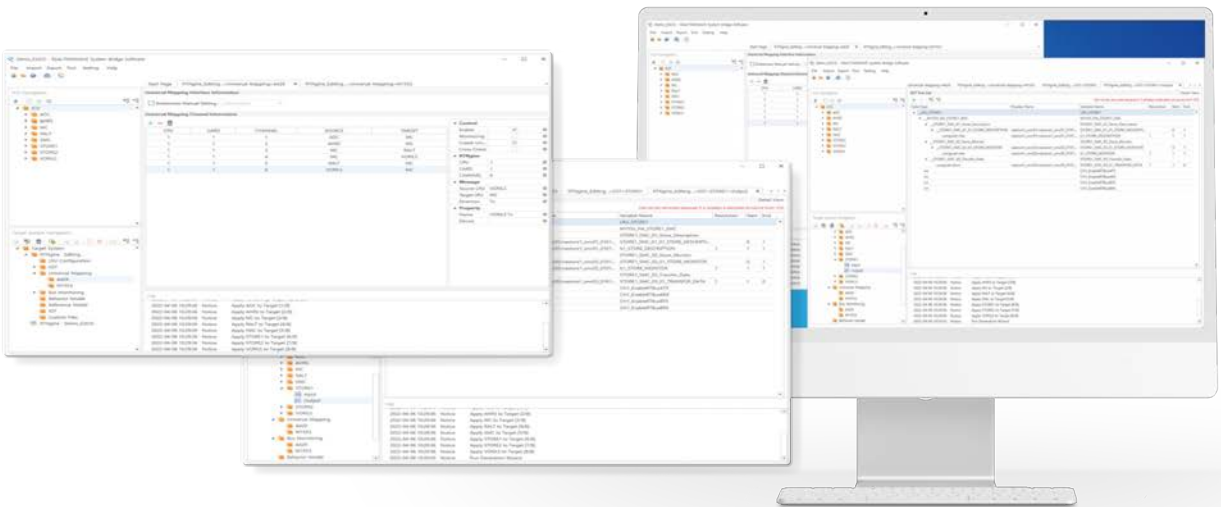


System Bridge

System Bridge

System Bridge provides user-customized interface to test system and form the environment of development. User can make the data for development & test based on ICD which is already made by user or tester's setting. Also, user can write and form many information of interface telecommunication, I/O mapping and bus monitoring.

Furthermore, it could improve user's productivity by providing verification tools for results.



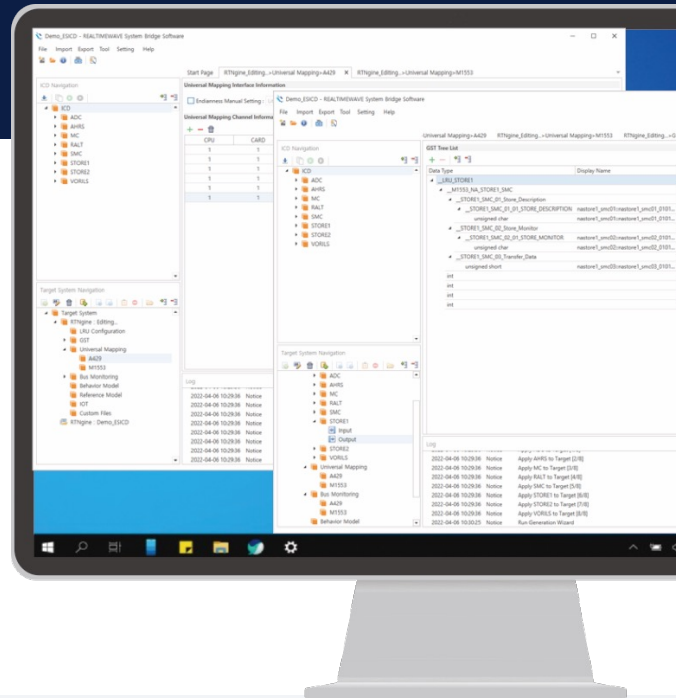
System Bridge is a key software to help set up a development and testing environment.

- ▶ Structuralize easily by importing ICD which are already written by users or the existing setting files
- ▶ Allow users to form system test environment files or standardized files
- ▶ Support function to verify product material and to manage version for testing environment

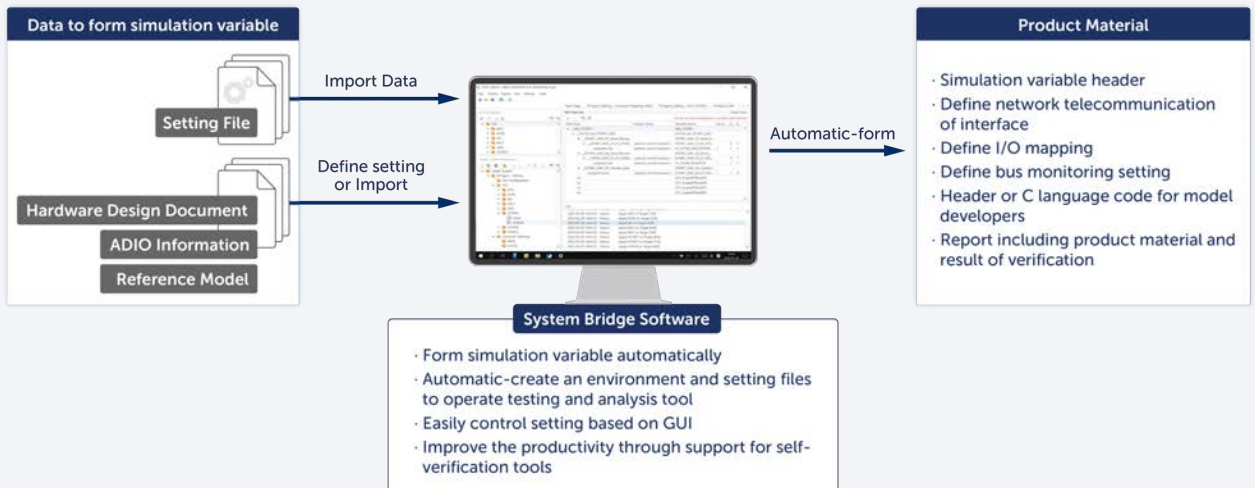


Highlights

- Possible to make environment (such as variable, telecommunication and monitoring) to develop and test flight system
- Available to control and manage data with a just few clicks, because it provides user-customized interface
- Support configuration file of 3rd Party(with each parser)
- Provide the function to automatic-form to improve the productivity for developer (standardized C header files and reports, etc.)
- Support self-verification tools for product material



System Architecture



Function

Import ICD (Database, Excel, XML)	Structuralize ICD which are already written before or made by user through ICD Management
Support 3rd party Configuration file (e.g. excel, XML) with additional Parser	Support configuration file of 3 rd party through adding parse plug-in. It allows users to re-use data they already manage
Generation of variables for simulation from ICD or other 3rd party files	Available to abstract variables which are able to execute testing automatically through analyzing structuralized ICD or 3 rd party files.
Generation of network communication definition each interface	Possible to create communication settings definitions about most of interface such as 1553B, ARINC429, SERIAL, etc.
Generation of data for bus monitoring and IO Mapping	Define information for monitoring and mapping setting for I/O
Generation of model header or source file for model developers	Create header or source code to develop model automatically
Manual and automated data output generation compatible with XML, HTML and Source Code	Possible to form various type files through adding plug-in. (ex. form header file complying with static test rules)
Provide for verification tools for generated files	User can form plug-in of each product material including verification tools per each product. As a result, the productivity of work will be improved.





Tel. +82-31-698-2980

E-mail. sales@realtimewave.com

Web. www.realtimewave.com/

#710 7th Fl., 240 Pangyoyeok-ro, Seongnam-si, Gyeonggi-do, Korea 13493